



Technology, Governance & Institutional Infrastructure

The effectiveness of an Institutional Risk Intelligence infrastructure does not depend solely on the quality of its quantitative models. It depends on the robustness of the entire technological architecture on which those models are developed, executed, and continuously updated. PRISM™ has been designed as a fully centralized proprietary infrastructure — where quantitative analysis, risk management, Position Sizing, Capital Allocation, and decision engines operate within a single unified technological ecosystem.

CHAPTER 4



Proprietary Quantitative Infrastructure

PRISM™ is not distributed as an installable application. It is not commercialized through software licenses. It requires no local updates. The entire framework resides exclusively within Global Asset's proprietary Data Center, where all quantitative processing takes place.

Single Operational Environment

Every connected account always uses the most current version of the quantitative engine — no client-side intervention required.

Centralized Evolution

Every framework improvement is implemented centrally and becomes immediately available across the entire infrastructure.

Methodological Consistency

Uniform operations, coherent methodology, and continuous technological evolution are guaranteed across all connected accounts.

Real-Time Risk Intelligence Engine

At the core of PRISM™ lies a proprietary Risk Intelligence Engine that processes every market variation in real time through a quantitative process integrating multiple simultaneous levels of analysis. The goal is not merely to produce information — it is to continuously transform that information into a coherent, quantitatively measurable decision-making process.



Risk & Volatility

Overall risk measurement and volatility analysis updated continuously with each market movement.



Correlations & Exposure

Correlation monitoring and exposure control across macro-categories, ensuring portfolio coherence at all times.



Position Sizing & Capital

Continuous update of the Position Sizing Engine and capital distribution control for optimal allocation efficiency.



Framework Efficiency

Ongoing evaluation of the framework's operational efficiency to ensure quantitative quality at every decision stage.

MT5 Institutional Integration

Access to PRISM™ is granted exclusively through the connection of an MT5 account — the communication protocol between the client's account and Global Asset's proprietary infrastructure. This architecture keeps the technological component completely separate from asset custody, while preserving the client's existing operational infrastructure without requiring dedicated software installations or modifications to existing processes.



No Software Installation

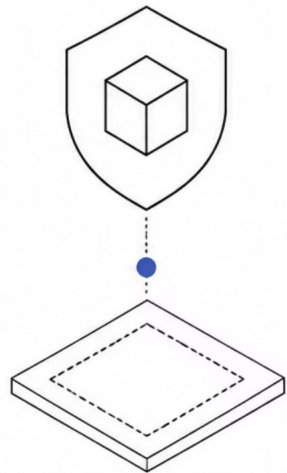
PRISM™ connects via MT5 standard — no new tools required on the client side.

Preserved Infrastructure

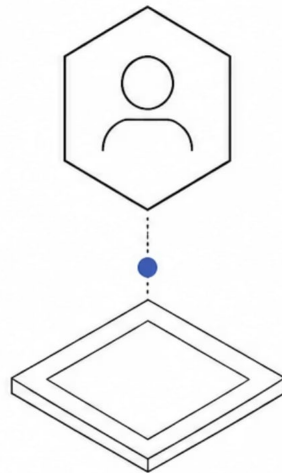
Clients retain their existing operational setup with zero disruption to current processes.

Institutional Governance

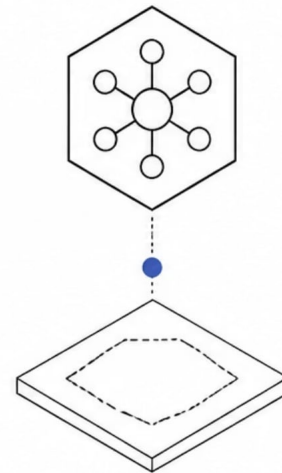
One of the foundational principles of PRISM™'s architecture is the complete separation of operational responsibilities. This structure eliminates any overlap between asset management, technological infrastructure, and quantitative processing — ensuring every role remains clearly identifiable and accountable.



Regulated Financial Intermediary
(asset custody only)



Client
(exclusive control of MT5 account)



Global Asset
(develops and manages the proprietary Risk Intelligence infrastructure only)

☐ This separation of responsibilities is one of the fundamental governance pillars of PRISM™ — each party maintains its defined role with no operational overlap.

Full Client Control

PRISM™ has been designed so that the client retains full control of their financial assets at all times. The architecture enforces a strict and unambiguous separation between patrimony and technology.

Assets Remain with the Client

Capital is always deposited with the regulated financial intermediary chosen by the client. Global Asset receives no funds and holds no custody over any assets.

MT5 Credentials Stay Private

Account credentials remain exclusively in the owner's possession. Global Asset cannot execute withdrawals, transfers, or any financial movements.

Technology Only

The infrastructure operates solely in quantitative risk measurement and decision-making support — never in financial asset management.



Continuous Quantitative Evolution

PRISM™ has been designed as a continuously evolving infrastructure. Framework evolution does not occur through random modifications to operational logic — it occurs through a structured process of quantitative research, statistical validation, and technological development.

1 Every operational cycle

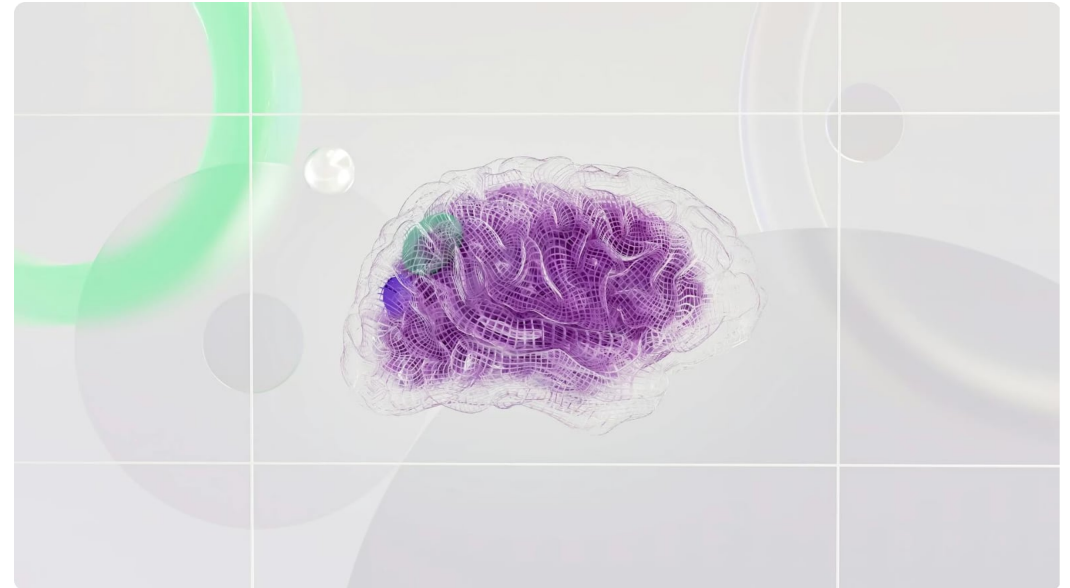
Expands the statistical base of the framework, enriching its decision-making foundation.

2 Every new configuration

Contributes to refining the proprietary quantitative models with greater precision.

3 Every new observation

Improves the quality of the decision-making process while preserving methodological consistency.



Why PRISM™ Is Not Software

PRISM™ was not designed to be distributed as a software product. Its value does not reside solely in the code developed — it resides in the infrastructure that makes the entire Institutional Risk Intelligence ecosystem operational.



Quantitative Engines

Proprietary models running centrally within the Global Asset Data Center.



Capital Allocation

Integrated Position Sizing and Capital Allocation operating within a single architecture.



Risk Intelligence

Continuous real-time risk measurement embedded throughout the decision process.



Quantitative Research

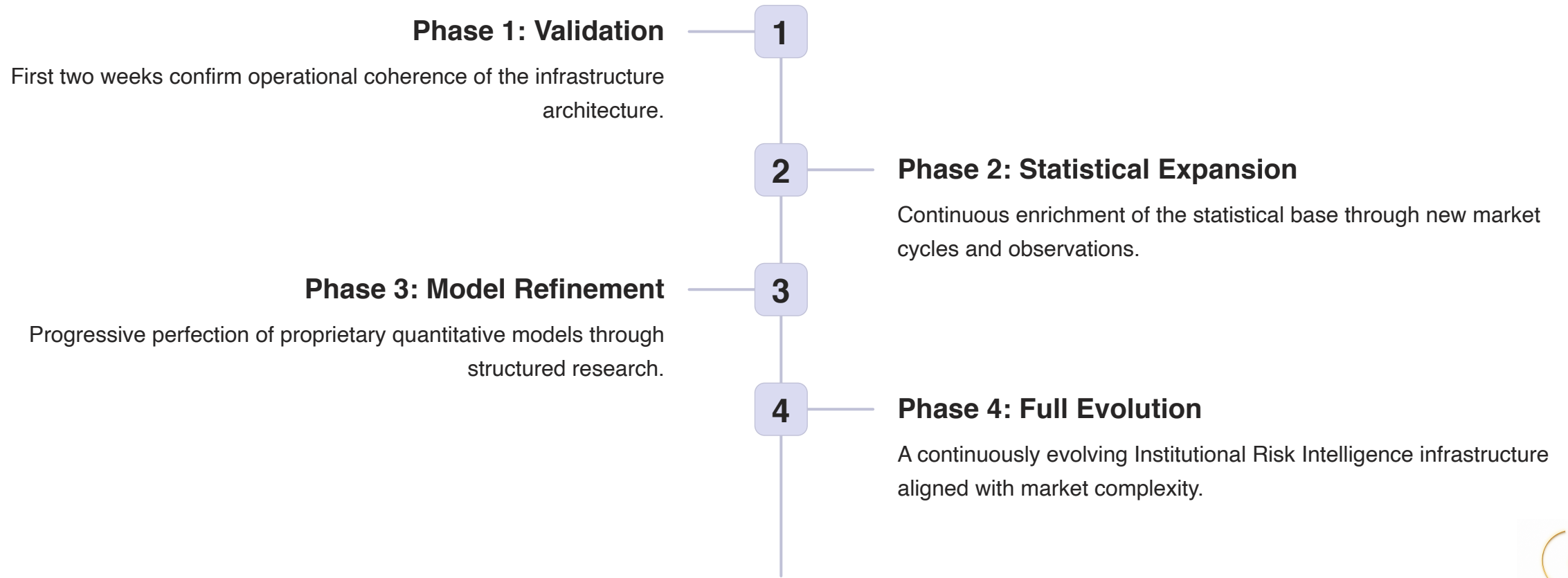
Ongoing research and validation ensuring the framework's continuous and structured evolution.



Access to the infrastructure is granted exclusively through an authorized MT5 account connected to Global Asset's proprietary Data Center — PRISM™ cannot be purchased as a standalone product.

Toward the Next Generation of Risk Intelligence

The growing complexity of financial markets demands infrastructures capable of integrating quantitative analysis, technology, and risk management within a single ecosystem. PRISM™ was born from this vision — not merely as an operational framework, but as a proprietary platform designed to accompany the evolution of asset management toward an increasingly quantitative, transparent, and risk-focused model.



Institutional Vision & Strategic Outlook

The first two weeks of activity represent only the beginning of PRISM™'s evolutionary path. Every quantitative infrastructure passes through an initial phase in which value is determined not solely by results produced, but by the capacity to build a statistical foundation broad enough to enable continuous evolution of the decision-making process.

Framework Philosophy

PRISM™ does not update based on time. It evolves based on the quality of the information it continuously acquires — making every new cycle a genuine improvement to the system's intelligence.

Growing Institutional Value

Each new operational cycle increases the framework's informational patrimony. Each new observation strengthens the Position Sizing Engine, the Capital Allocation Model, and the entire Risk Intelligence architecture.

The Value of Data

In the financial sector, capital is traditionally measured in monetary terms. For PRISM™, a second equally important form of patrimony exists: the **informational patrimony**. Every completed operation, every volatility variation, every shift in correlations between macro-categories represents a new source of quantitative knowledge.



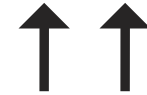
Data Growth

The informational patrimony grows inevitably with every market cycle processed.



Interpretation Depth

More data processed equals greater capacity to interpret market dynamics with precision.



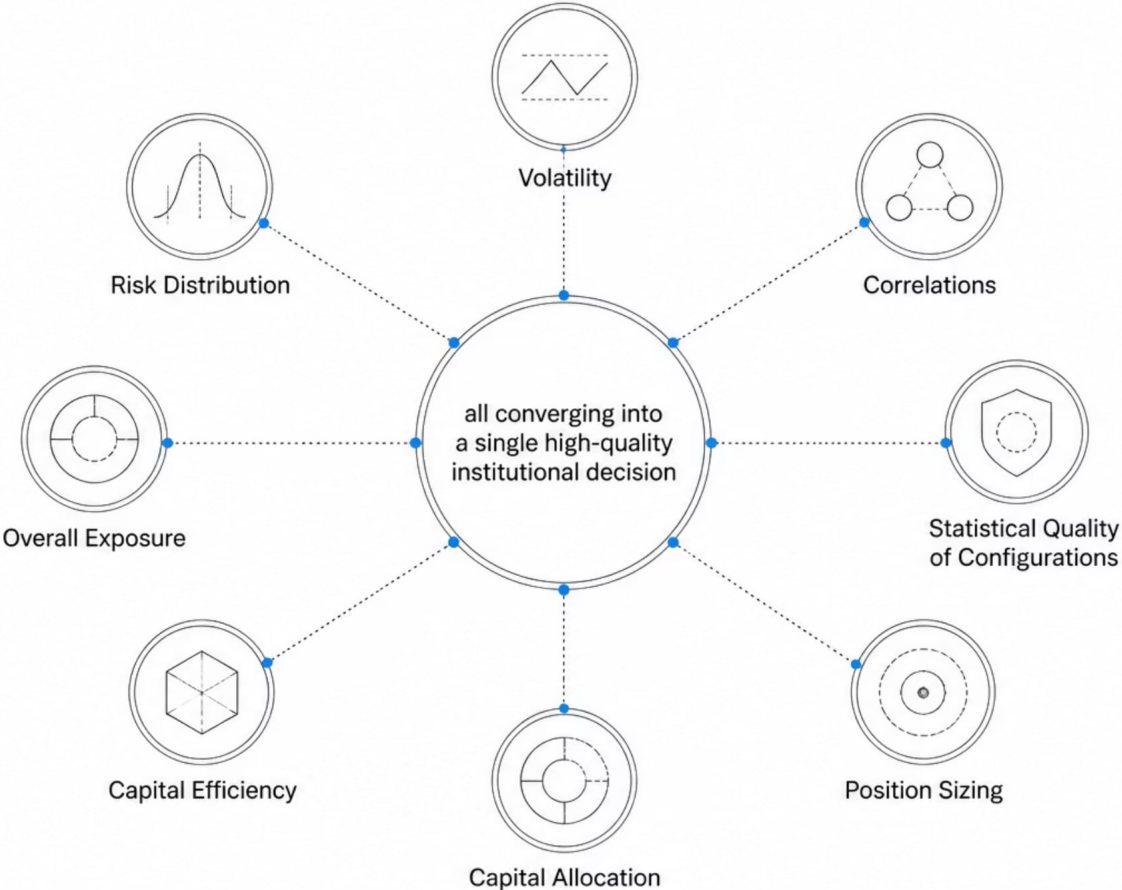
Decision Quality

As the statistical base expands, the quality of the entire decision-making process improves continuously.

Capital may increase or decrease. The informational patrimony, by contrast, grows inevitably — and this constitutes one of PRISM™'s principal competitive advantages.

Institutional Decision Process

PRISM™'s design begins from a fundamental principle: a decision should never be the result of a single piece of information. Every decision must represent the synthesis of a quantitative process in which multiple factors contribute to the final assessment.



The objective is not to produce a greater number of decisions — it is to produce decisions of progressively superior quality through the continuous integration of all quantitative dimensions.

Building Institutional Confidence

In the world of professional asset management, trust is not born from a single result. It is born from **continuity**, from **discipline**, and from the capacity to maintain coherent behavior over time.

PRISM™ was developed with precisely this philosophy. Every component of the framework contributes to the construction of a stable, verifiable, and quantitatively measurable decision-making process.

Stability Over Aggressiveness

The infrastructure systematically privileges stability over operational aggressiveness.

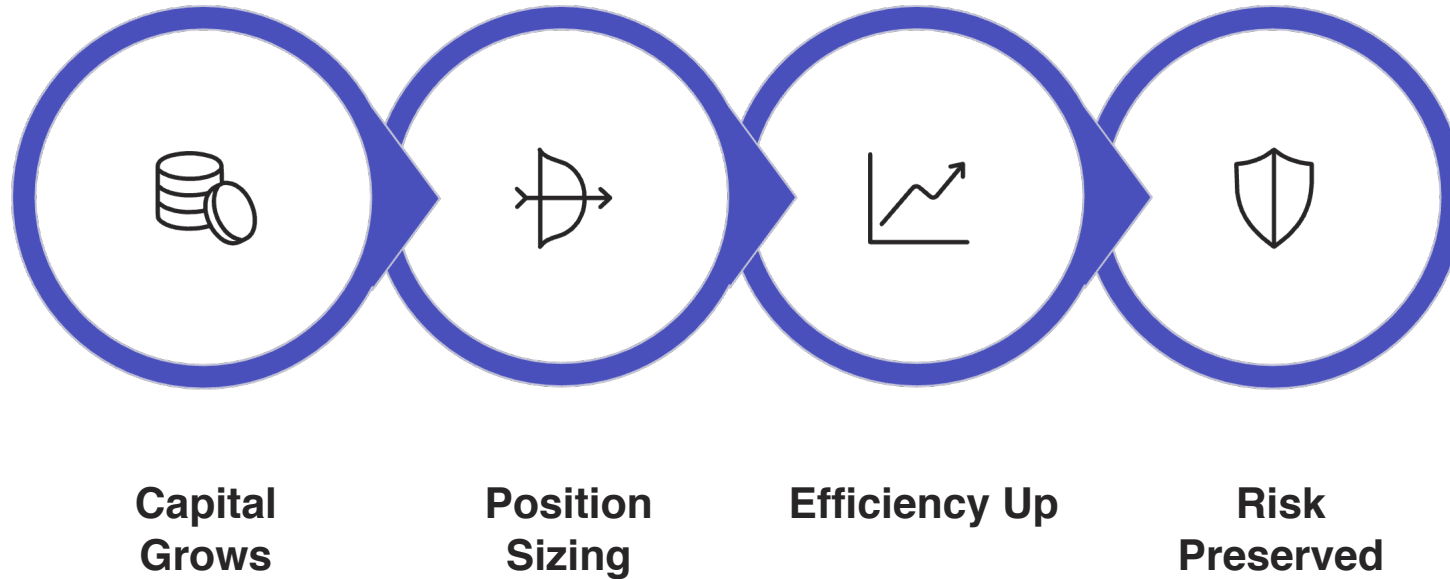
Process as the True Objective

Portfolio growth is a consequence. The quality of the process is the real goal.



Scalability Without Complexity

One of the most relevant aspects of PRISM™'s architecture is its capacity to grow without increasing operational complexity. The framework scales with capital while preserving its foundational quantitative principles.



No Structural Modifications

Expansion of capital under management does not require architectural changes to the framework — the Position Sizing Engine adapts naturally.

Risk-Neutral Scaling

Scalability is achieved not by increasing risk levels, but by progressively improving capital efficiency across the infrastructure.

Beyond Traditional Risk Management

For many years, Risk Management was considered a control function applied *after* the decision-making process. PRISM™ introduces a fundamentally different approach.

1

Traditional Model

Risk Management as a post-decision control layer — reactive, retrospective, and secondary to the investment process.

2

PRISM™ Approach

Risk measurement as the starting point — every decision originates from a preventive quantitative risk assessment.

3

Risk as Decision Engine

Risk is not simply controlled — it becomes the primary driver of the entire decision-making process.

The Next Stage of PRISM™

The first two weeks validated the operational functioning of the infrastructure. The next phase is dedicated to consolidating the statistical patrimony and continuously refining the proprietary quantitative models. Seven key development directions define this roadmap:

01

Risk Intelligence Engine Evolution

Deepening real-time processing capabilities and expanding analytical dimensions.

02

Position Sizing Engine Refinement

Continuous precision improvement in sizing logic based on accumulated statistical evidence.

03

Capital Allocation Model Enhancement

Ongoing optimization of allocation efficiency across all portfolio macro-categories.

04

Correlation Analysis Expansion

Broader and deeper analysis of inter-asset correlations across market cycles.

05

Proprietary Risk Metrics Development

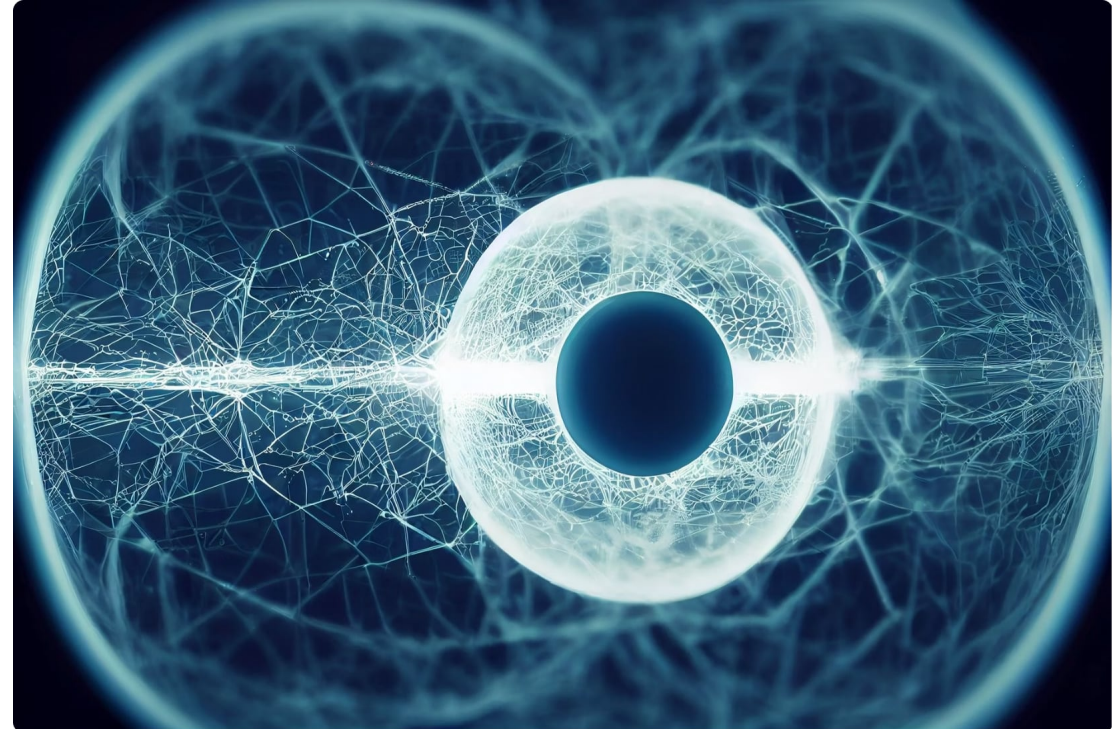
New bespoke metrics for risk measurement, multi-asset depth, and capital efficiency optimization.

Final Vision

In the next decade, competitive advantage in asset management will not be determined by the availability of ever-greater quantities of data.

It will be determined by the capacity to interpret that data with **greater speed, greater depth, and greater precision.**

Global Asset developed PRISM™ with this vision — not to build new software, not to develop a new operational model, but to realize a proprietary Institutional Risk Intelligence infrastructure where quantitative research, technology, risk analysis, and capital allocation converge within a single decision-making process.



The First Chapter

The first two weeks mark the beginning of a broader journey toward institutional-grade quantitative excellence.

The Ambition

Building day by day a quantitative foundation that is broader, more solid, and more capable of supporting institutional-level decisions.

Conclusions

The first two weeks of PRISM™'s activity represent the first step of a journey designed to develop progressively over time. For an Institutional Risk Intelligence infrastructure, this initial period does not constitute an endpoint — it marks the beginning of a quantitative patrimony destined to grow continuously through new data, new market cycles, and new statistical evidence.

Architectural Coherence Confirmed

Observed results validate the coherence of the designed architecture across all operational dimensions.

The True Measure

The most significant element is not return alone — it is the equilibrium between capital growth, risk control, and decision-making efficiency.

A Single Guiding Objective

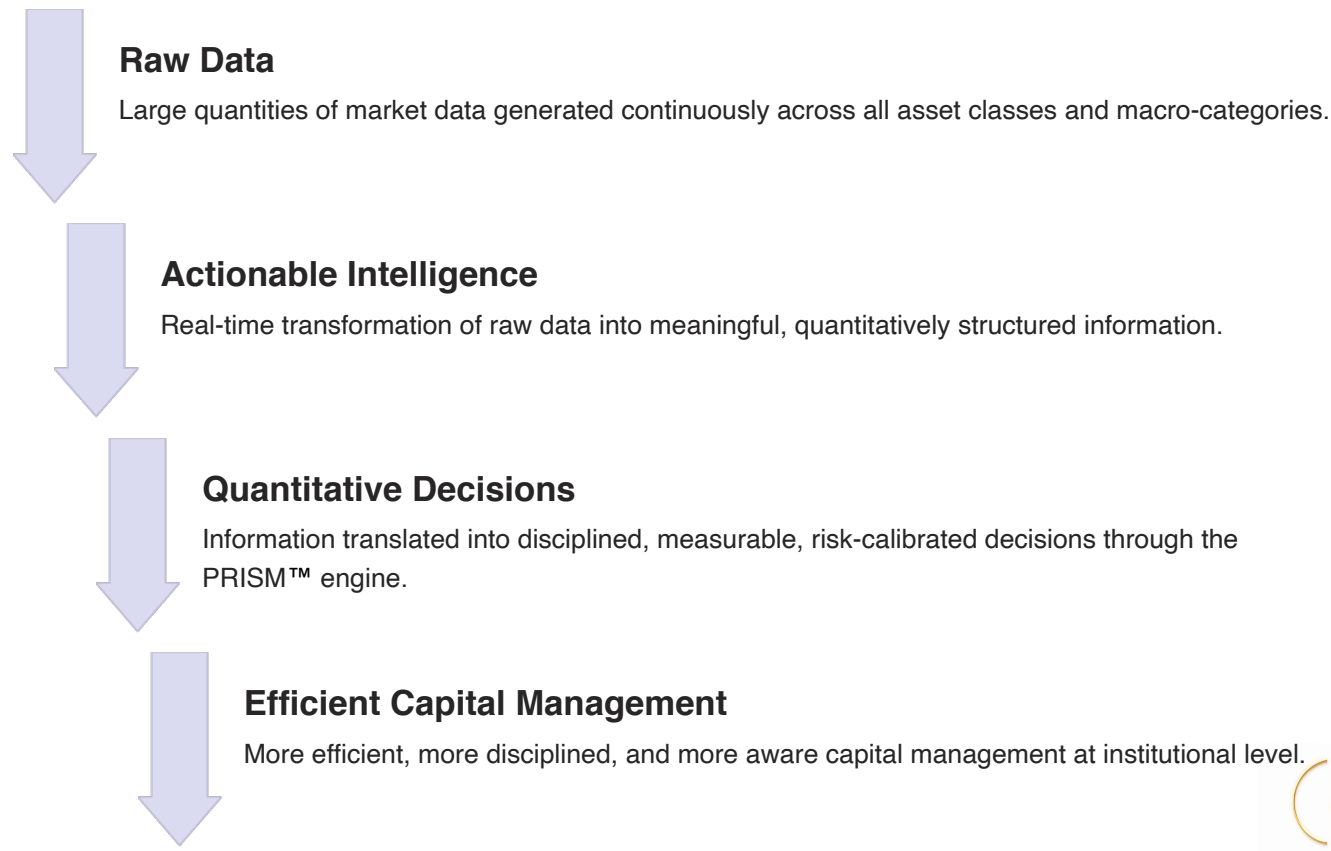
Every component — Position Sizing, Capital Allocation, Risk Intelligence Engine — was built to ensure every decision is supported by a quantitative measurement of risk.

PRISM™ was built on the conviction that the quality of asset management must be measured not only by the capacity to generate return, but above all by the capacity to understand risk, distribute it efficiently, and control it continuously over time.



Beyond Traditional Portfolio Management

Over recent decades, the asset management industry has concentrated much of its evolution on developing new products, new strategies, and new financial instruments. PRISM™ starts from a different premise: the most important innovation does not concern the number of available tools — it concerns the **quality of decisions**.



The Strategic Vision

Global Asset views PRISM™ as the technological nucleus around which to develop its future proprietary infrastructure dedicated to institutional Risk Intelligence. The objective is not the realization of a single operational framework — it is the construction of a quantitative ecosystem capable of evolving constantly through research, technology, and continuous development.

Research & Innovation

New quantitative models developed through structured research and statistical validation.

Evolving Intelligence

PRISM™'s growth is determined above all by the continuous evolution of its capacity to interpret risk.



Infrastructure Development

Every improvement enriches the entire framework and increases its informational patrimony.

Market Understanding

Each new operational cycle deepens the system's capacity to interpret complex market dynamics.

❏ The growth of PRISM™ will not be determined solely by the expansion of monitored capital — but above all by the continuous evolution of its capacity to interpret risk at institutional level.